

S-2 shutter



S-2 Shutter



When high-security is a priority, Alumatec Pacific Products offers the protection of the S-2 aluminum shutter. Manufactured using solid aluminum slats, this style of shutter aids in air flow control, minimizes visibility, and increases reach-through security. The S-2 shutters are an ideal choice for use in stadiums, schools, hospitals, high-end retailers and any other interior or exterior applications. These roll-up shutters are both functional and aesthetically pleasing; promising to blending well with any building design.

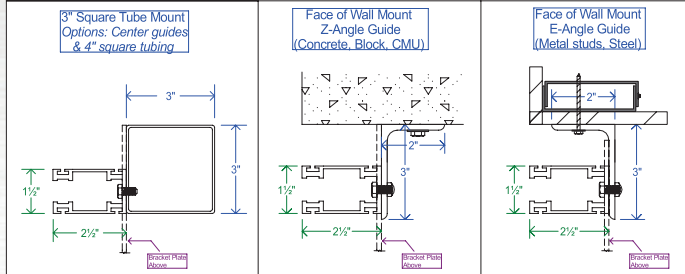
Standard Features:

- 100% enclosed curtain.
- Solid aluminum interlocking slats.
- Accommodates openings up to 28' wide and 20' tall.
- Optional vision windows (safety glass or polycarbonate).
- Motors are recommended on openings over 150 square feet.

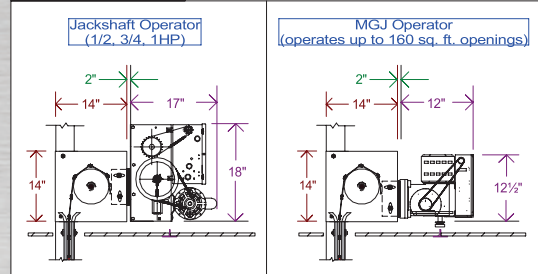


Design Specifications

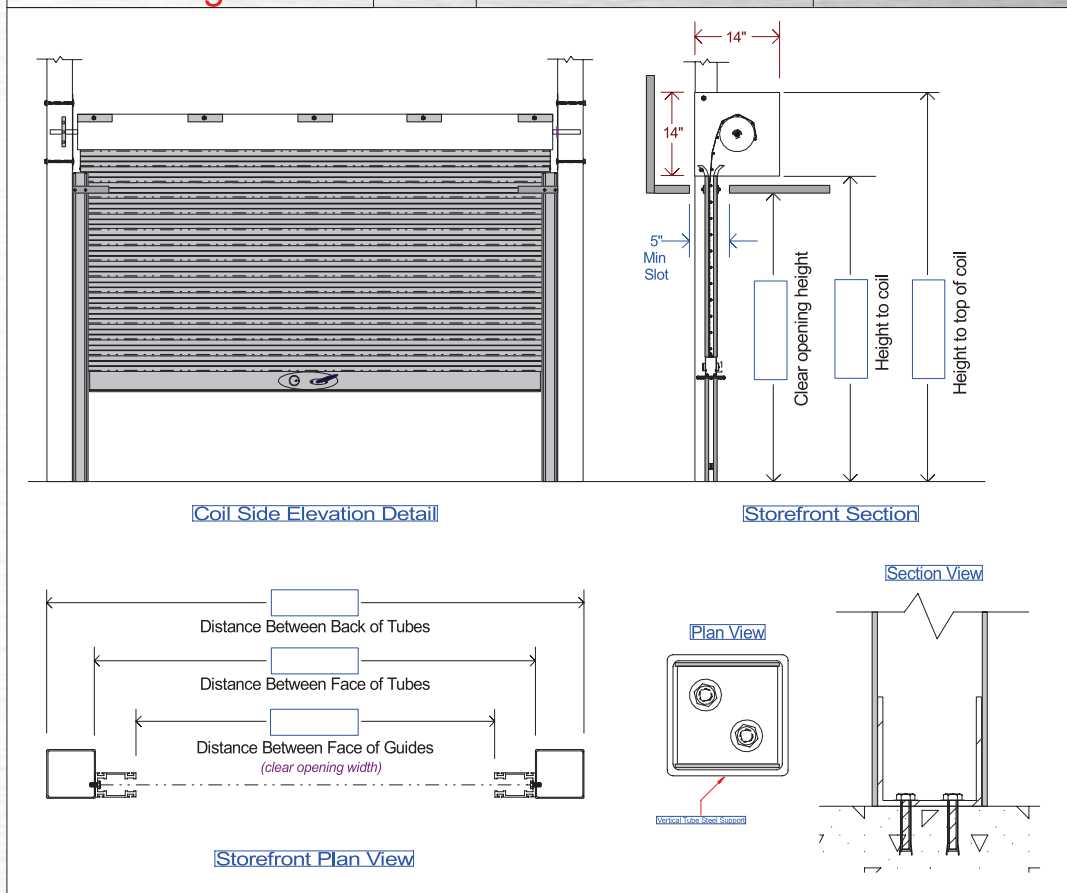
Tube & Guide Options



Motor Details



S2 Drawing Details



Available Finishes

	Clear	Bronze	Black	White	Red
Aluminum Curtain	Standard	Custom	Custom		
Bottom Bar & Guides	✓	✓	✓	✓	✓

See our website for complete choice of Powder Coat color options

Alumatec Pacific Products Model: S-2 (Solid Shutter Roll-Up)

PART 1 GENERAL

1.1 SUMMARY

- A. Aluminum rolling shutter manufactured by **Alumatec Pacific Products** is as shown on this submittal.
- B. Design, construction and preparation of openings, access panels, field wiring, wire conduit, fuses, disconnect switches, finish or field painting are excluded (unless powder coat finish is provided).

1.2 SYSTEM DESCRIPTION

- A. Rolling shutters are designed for standard cycle usage, with 25,000 cycle life spring and bearing assemblies.

1.3 WARRANTY

- A. Limited (see warranty sheet) Two years from date of shipment – warranty does not apply to finishes.

PART 2 PRODUCTS

2.01 MANUFACTURER

- A. **Alumatec Pacific Products:** 1155 West 500 North, Centerville, UT 84014 – www.alumatecpp.com

- B. **Sales Department:** 801-298-0181 ext. 1 or toll free 877-770-0181 ext. 1

2.02 MATERIALS

- A. **Curtain** is assembled from horizontal extruded aluminum interlocking solid slats, from .060 gauge pure US billet aluminum. Standard finish to be commercial clear Satin anodized. Extruded interlocking hinge system every 3½” on vertical centers. Curtains interlocking slats married by #10 SMS with USS fender washer at each end of slat. (Wind lock USS washers standard on every 6th slat for exterior applications).

- B. **Bottom Bar** is a rectangular shape extruded from 6063-alloy aluminum, attached to the bottom of the curtain.

- C. **Barrel** is steel tubing or pipe, 6” minimum diameter, to contain counterbalance assembly and support the curtain with a maximum deflection of 0.03 per ft. of width. Counterbalance assembly consists of coil tempered helical torsion spring(s) mounted on a cold rolled steel shaft, rotating through a sealed bearing. Welding is not to be used to attach plug to barrel at spring end. Spring tensions adjustable by a tension wheel outside of bracket.

- D. **Brackets** are steel plates, 3/16” minimum thickness, bolted to guides, to support barrel. Bracket on operator side is fitted with a flange or sealed roller bearing.

- E. Guides are rectangular shapes extruded from 6063-alloy aluminum, formed to retain curtain and fitted with wool pile strips. Guides are attached to jambs with ¼” minimum bolts spaced not more than 24” on center. Removable and adjustable curtain stops are provided on guides at pre-determined stop height.

- F. **Operation** is as indicated:

- PUSH-UP – Lifting up/pulling down door with handles and foot step on the bottom bar.
- CHAIN – Endless hand chain on a chain sprocket operating reduction gears.
- AWNING CRANK- Removable handles operating a bracket-mounted gearbox or reduction gears.
- MOTOR – Push button, key, or remote activation of an electric operated, as shown on this submittal.

- G. **Locking** is as indicated:

- a. CYLINDER LOCK on the bottom bar (double throw-bolt activated by center thumb turn or key, operable from inside, outside, or both sides of door, as indicated and shown on this submittal).
- i. Keyed Cylinder Exterior Thumb-Turn Cylinder Interior or Keyed Cylinder Inside
- Standard Schlage Keyway cylinder
- Best interchangeable core cylinder (Medeco, KeyMark, Falcon, etc.)
- SELF-LOCKING (through the gear reduction of the motor operator).

2.03 FINISHES

- A. Aluminum curtain finish as indicated:

- Clear Anodized (standard) Black Anodized Bronze Anodized RAL # _____

- B. Bottom bar, Bottom bar cap/flange plate, and guides finish as indicated:

- Clear Anodized Black Anodized Bronze Anodized RAL # _____

- C. Exposed steel surfaces are painted with a rust-inhibiting gray or black primer on exterior applications.

PART 3 EXECUTIONS

3.01 INSTALLATION

- A. Doors are to be installed in accordance with Alumatec Pacific Products installation instructions and by authorized, and certified professional Alumatec Pacific Products door dealer.



1155 West 500 North
Centerville, Utah 84014
Tel: 801.298.0181 Fax: 801.298.0905
Toll Free: 877.770.0181 ext 1



www.alumatecpp.com • info@alumatecpp.com • www.alumatecpp.com

Authority Dock & Door
877-247-2935
www.authoritydockanddoor.com